

THE EMOTIONAL CUP

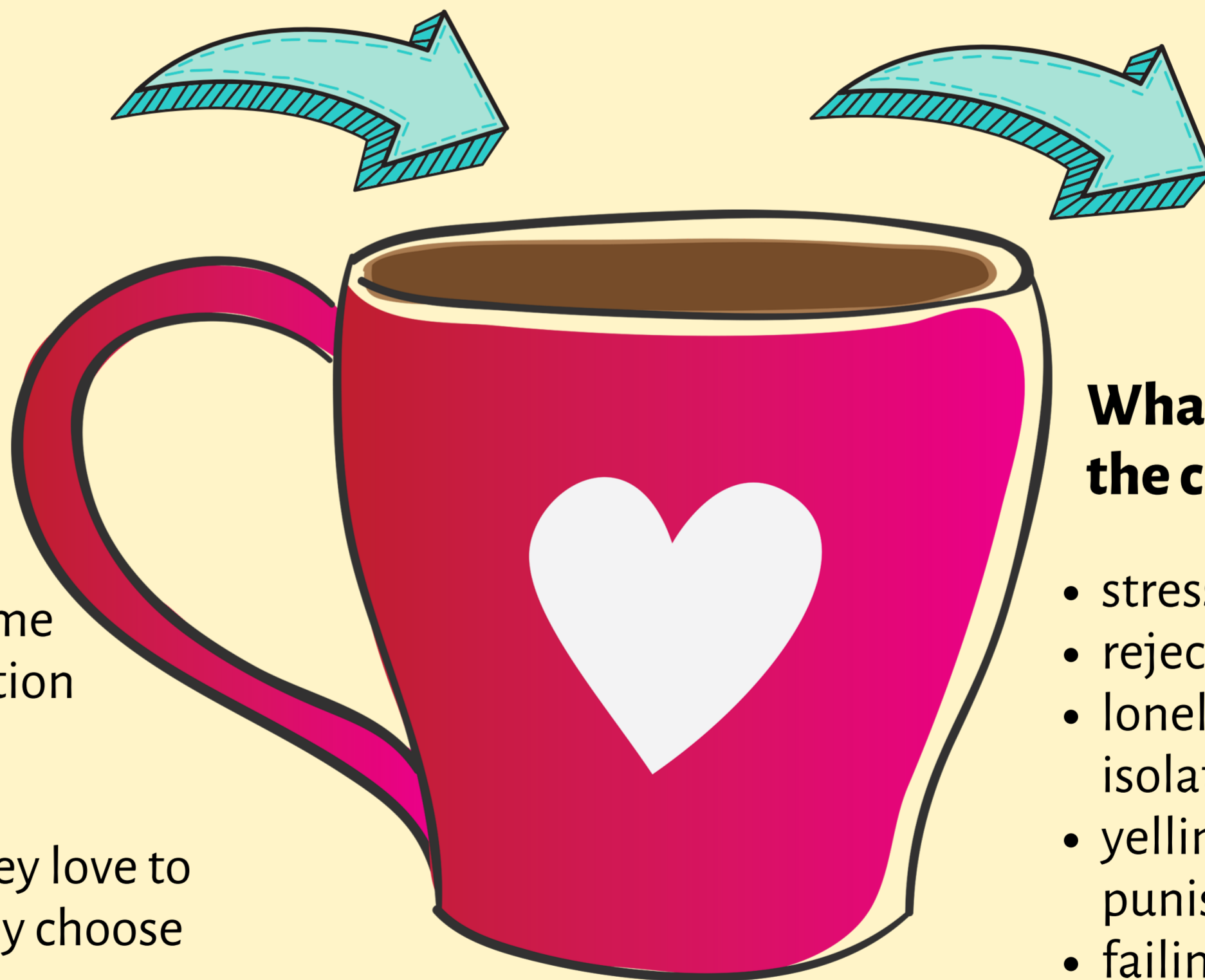
Imagine that every child has a cup that needs to be filled -- with affection, love, security, and attention. Some seem to have a full cup most of the time, or know good ways to get a refill. But most children get a little nervous when their cup gets near empty.

Some ways that children deal with having an empty cup:

- steal from other people's cups
- misbehave to get your attention and show that they need a refill
- seem to have bottomless cups, or need constant 'topping off'
- can't sit still for refills or actively refuse them
- bounce off the walls when they approach 'empty'
- think they have to fight or compete for every refill

What fills a child's cup:

- play
- friendship
- one-on-one time
- love and affection
- connection
- succeeding
- doing what they love to do or what they choose to do



What empties the cup:

- stress and strain
- rejection by peers
- loneliness and isolation
- yelling and punishment
- failing
- fatigue
- doing what they're forced to do or they hate to do